

Summer Mystery Shawlette - Part Four

Wendy D. Johnson

Before starting Part Four, you will have completed all 3 repeats of Chart C as described in Part Three.

Work Chart D:

Row 1: K3, *work across the 21 stitches of the chart,* k1 (center stitch), repeat between * *, k3.

Note that you will decrease 1 stitch at the beginning and end of the chart so that at the end of Row 1 you will have on the needle 19 chart stitches on each side of the shawl center stitch.

Row 2: K3, purl to the last 3 stitches, k3.

Work all 20 rows of Chart D, working the even-numbered chart rows as Row 2.

At the end of Chart D you will have 9 stitches on your needles.

Next row: (sl1 k2tog pss0) three times. 3 stitches remain.

Next row: p3tog and bind off.

Chart D

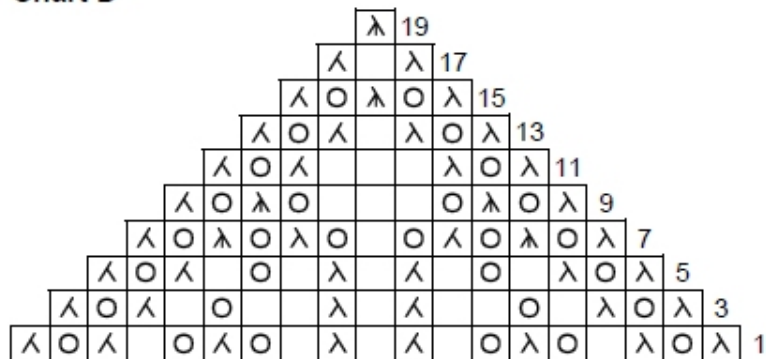


Chart Key

□	K on RS, P on WS
○	Yarn over
λ	SSK
λ/	K2tog
λ	Sl1, k2tog, pss0

Chart D in Words

Row 1: k3, *ssk, yo, ssk, k1, yo, ssk, yo, k1, k2tog, k1, ssk, k1, yo, k2tog, yo, k1, k2tog, yo, k2tog*, k1, work between asterisks again, k3 (45 sts)

Row 2 and all even-numbered rows: k3, p to last 3 sts, k3

Row 3: k3, *ssk, yo, ssk, k1, yo, k2, k2tog, k1, ssk, k2, yo, k1, k2tog, yo, k2tog*, k1, work between asterisks again, k3 (41 sts)

Row 5: k3, *ssk, yo, ssk, k1, yo, k1, k2tog, k1, ssk, k1, yo, k1, k2tog, yo, k2tog*, k1, work between asterisks again, k3 (37 sts)

Row 7: k3, *ssk, yo, sl1 k2tog pssso, yo, k2tog, yo, k1, yo, ssk, yo, sl1 k2tog pssso, yo, k2tog*, k1, work between asterisks again, k3 (33 sts)

Row 9: k3, *ssk, yo, sl1 k2tog pssso, yo, k3, yo, sl1 k2tog pssso, yo, k2tog*, k1, work between asterisks again, k3 (29 sts)

Row 11: k3, *ssk, yo, ssk, k3, k2tog, yo, k2tog*, k1, work between asterisks again, k3 (25 sts)

Row 13: k3, *ssk, yo, ssk, k1, k2tog, yo, k2tog*, k1, work between asterisks again, k3 (21 sts)

Row 15: k3, *ssk, yo, sl1 k2tog pssso, yo, k2tog*, k1, work between asterisks again, k3 (17 sts)

Row 17: k3, *ssk, k1, k2tog*, k1, work between asterisks again, k3 (13 sts)

Row 19: k3, * sl1 k2tog pssso *, k1, work between asterisks again, k3 (9 sts)

Finish off the shawl:

Next row: (sl1 k2tog pssso) three times. (3 sts)

Next row: p3tog and bind off.

Block Your Shawl:

Weave in all ends, and soak the shawl in warm water with a tablespoon or so of woolwash or a mild detergent for fifteen minutes or so. Rinse the piece in clear water of the same temperature and gently squeeze out any excess water.

Spread the piece out on your blocking surface and stretch it as needed to open up the lace pattern and pin it down, stretching out each point on the bottom edge. Use blocking wires if desired, and rust-proof T-pins to hold the knitted piece in place and let it dry completely.

This pattern is copyright protected.

© Wendy D. Johnson 5/11

All rights reserved.

<http://wendyknits.net>

This pattern is for your personal, non-commercial use only